



ShoreGuard

Synthetic Sheet Piling



PROTECTING
YOUR SHORELINE





BUILD IT ONCE, **BUILD IT RIGHT**

Whether you are building a new seawall or replacing an old one,
it's an investment in your property that should last.



THE VALUE OF A SHOREGUARD WALL



Customizable

With a wide range of profiles, colors and textures, design options are endless.



Sustainable

ShoreGuard sheet piling is made from over 90% recycled material and is 100% recyclable.



Hassle-Free

ShoreGuard is impervious to deterioration from weather, corrosion, and marine borers that plague conventional materials.



Warrantied

ShoreGuard's 50 year warranty is backed by CMI, the industry leader for over 30 years.

Engineered For Beauty And Brawn

THE SCIENCE OF SHOREGUARD VINYL SHEET PILING

Invest in a product with proven performance and a long history. ShoreGuard synthetic sheet piling is the most trusted and widely used brand of sheet piling in the world.

XCR Technology

Manufactured in the only facility dedicated solely to the production and technological advancement of vinyl sheet piling.

I-Beam Lock

This patented design adds strength and rigidity to the most critical part of the panel, the interlocks.

100% Virgin Capstock

Shoreguard incorporates the most durable and highest quality materials to ensure excellent durability, colorfastness, and resistance to the elements.

Eco-Friendly

Made From over 90% recycled material and 100% recyclable.



DEFINE YOUR STYLE

Enhance The Look Of Your Home

Reflect the interior style of your home into your outdoor space. Craft a seawall as beautiful and lasting as the memories you create on the water.





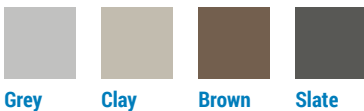
FlatPanel Profile:

The newest development in vinyl sheet pile technology emulates the look and feel of wood or textured concrete with the same longevity of traditional corrugated sheet piling.



Corrugated Profile:

This classic synthetic sheet pile look optimizes performance and economy.



Created specifically to pair with ShoreGuard vinyl sheet piling, the ArmorWare line of products provides the same quality and performance you can expect from CMI.

Anchors: Prevent premature failure of your seawall with our DMA anchors, constructed from marine grade aluminum for added longevity.



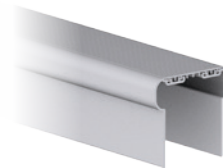
Shown:
DMA 9

Tie Rods: ArmorWare Tie Rods outlast traditional steel tiebacks in marine environments. Select from our polymer coated steel or mill-finish aluminum options.



Shown:
1" Coated Steel Tie Rod

Capping: ArmorWare corrosion resistant caps create a sleek, finished look with low-maintenance sensibility. Available in a range of materials, finishes and colors.



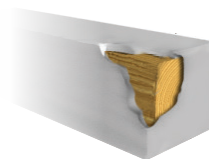
Shown:
VersaCap in Grey

Wale Beams: Extend the height of your seawall with ArmorWare Wale Beams. Engineered to stand up to wave action, UV exposure and other environmental impacts.



TimberGuard:

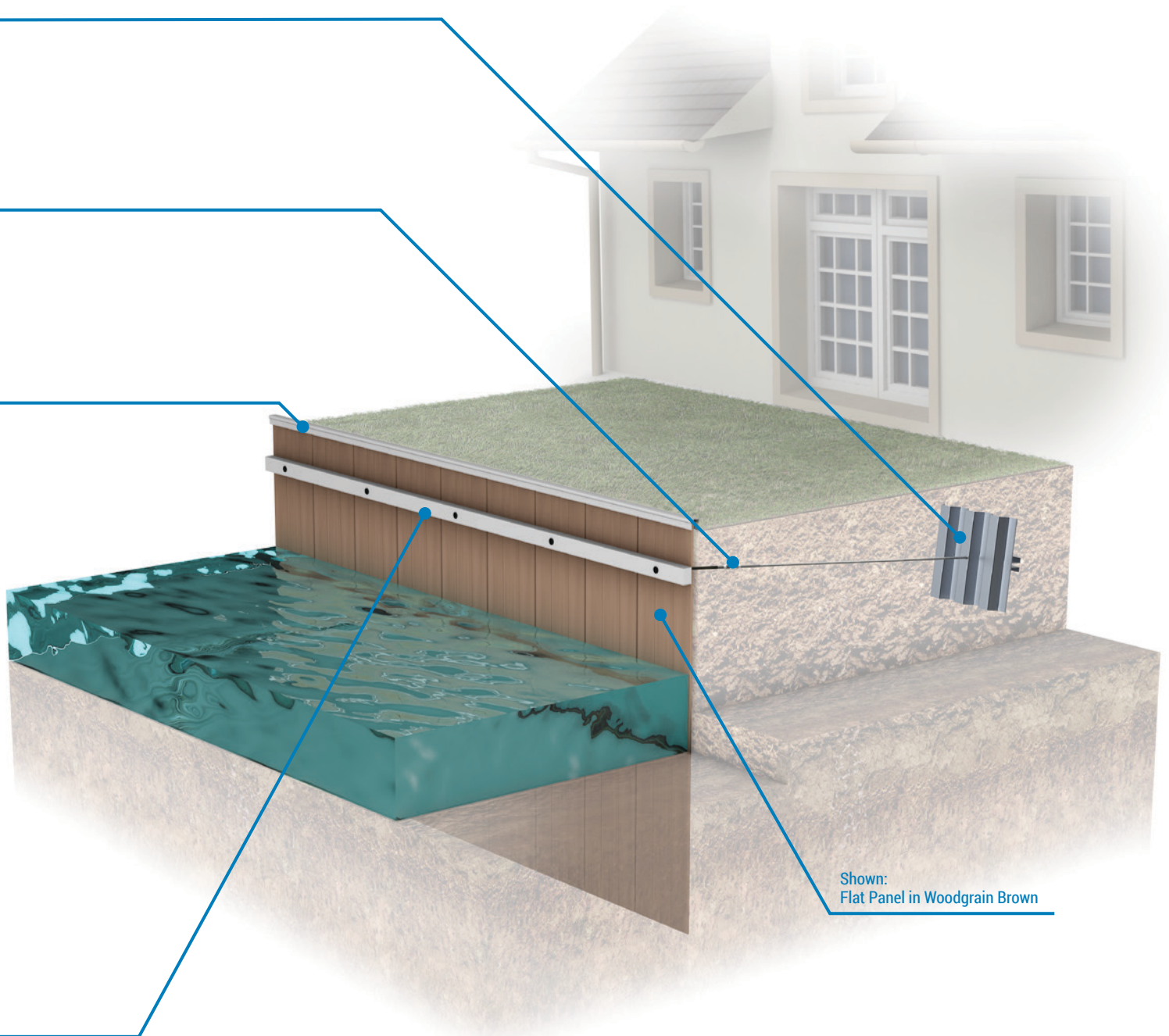
A cost-effective, longer-lasting alternative to treated wood. TimberGuard's unique polymer encapsulation extends the service life of wooden components. Available in a wide variety of round timber piles and lumber.



Shown:
6x8 TimberGuard
Drop Wale in Grey

COMPLETE PROTECTION

A wall is only as strong as it's weakest component. CMI's complete seawall system is designed to extend the long-life, durability and aesthetics of ShoreGuard to all wall components.



Shown:
Flat Panel in Woodgrain Brown

Build Your Own Seawall in 3D at
www.cmiwaterfront.com



ShoreGuard

Synthetic Sheet Piling

